

condominio  
RESIDENCE  
CIRMOLO  
SAPPADA



# discover SAPPADA

*L'incantevole borgo nascosto tra le Dolomiti che offre sia di inverno che d'estate un'atmosfera magica. Un luogo ricco di suggestioni e paesaggi meravigliosi, ma anche un luogo dotato di grande storia e tradizioni.*



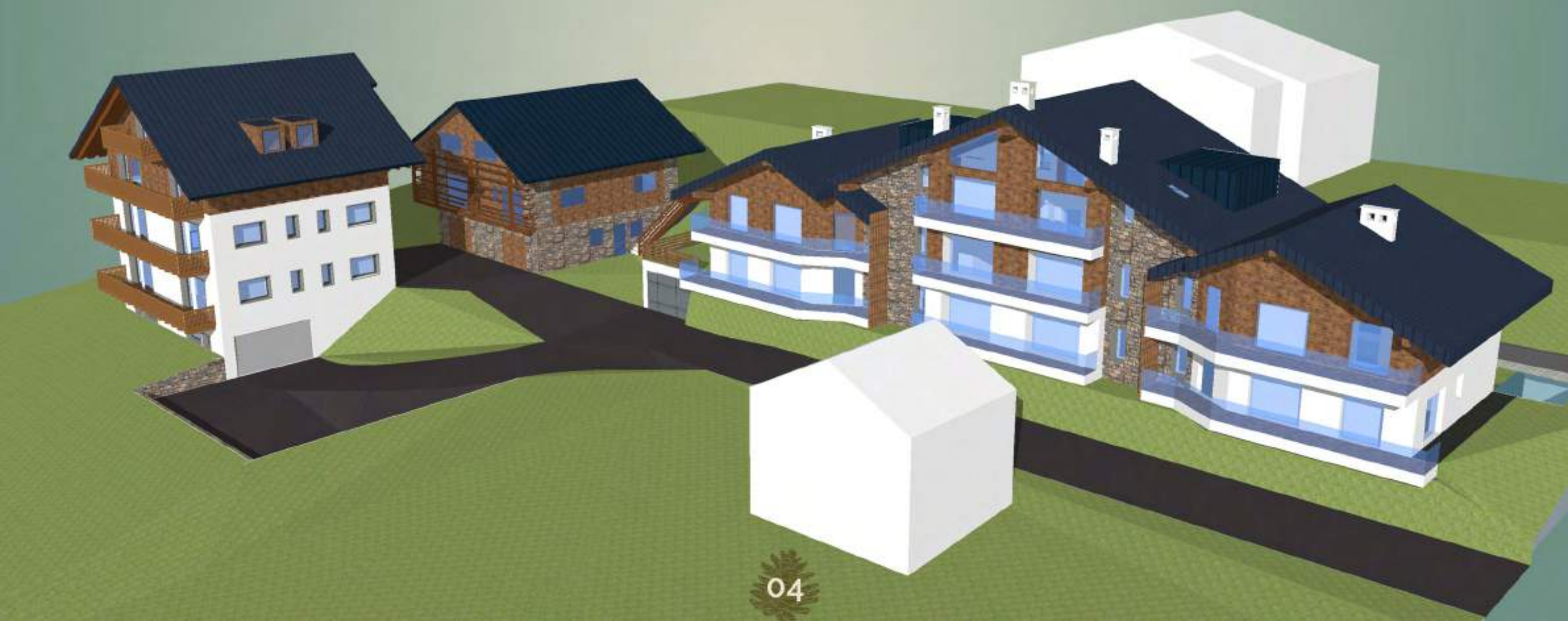
inquadramento



planimetria generale



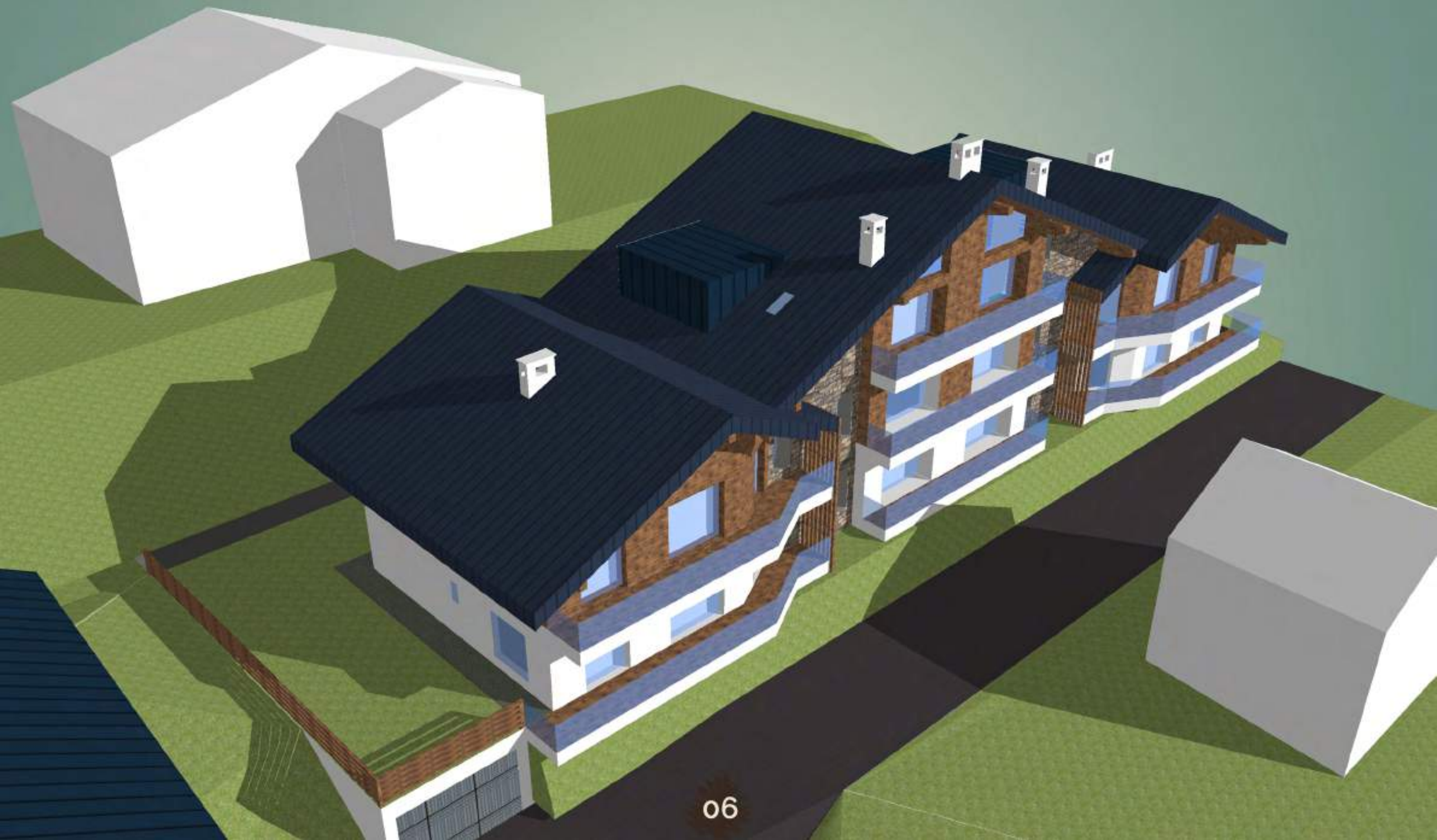
vista generale



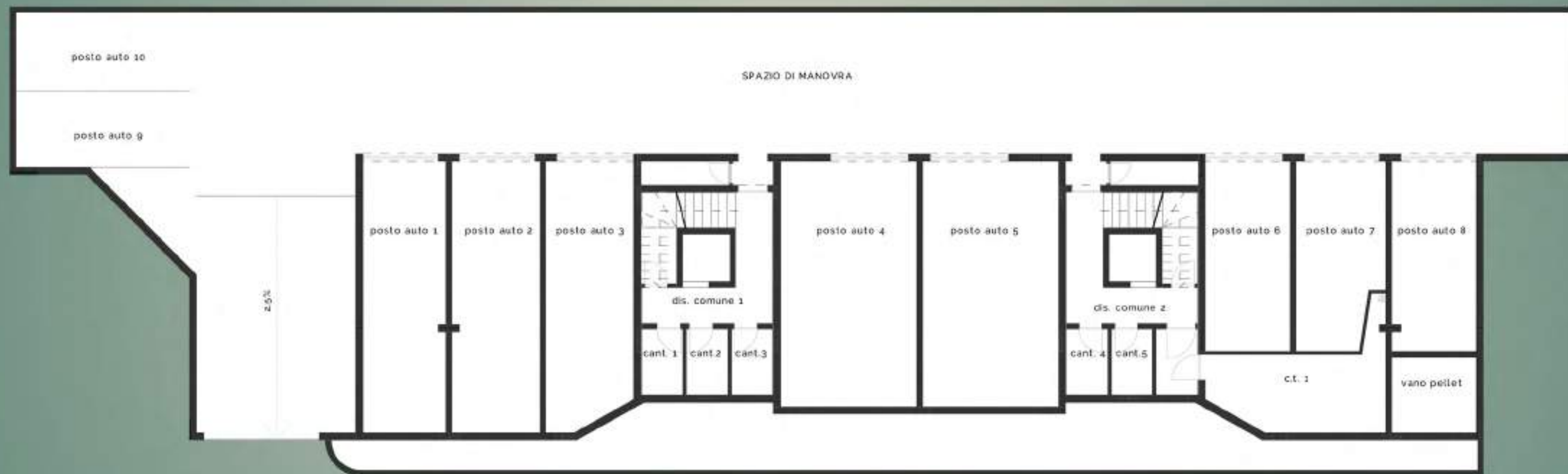
vista condominio



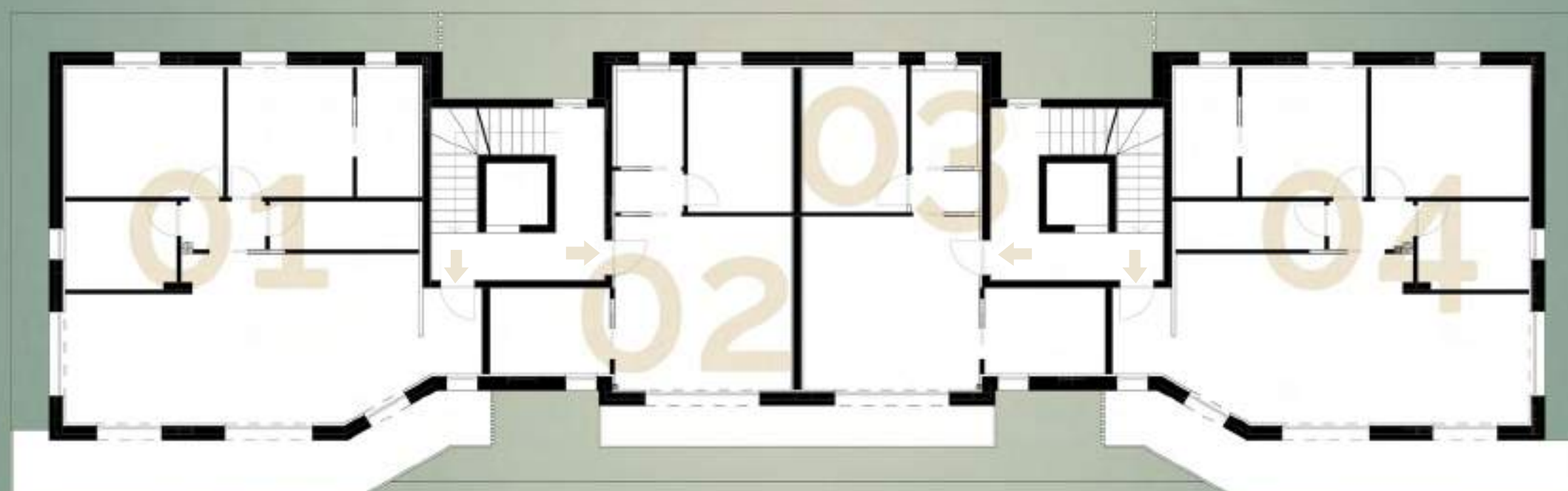
vista condominio



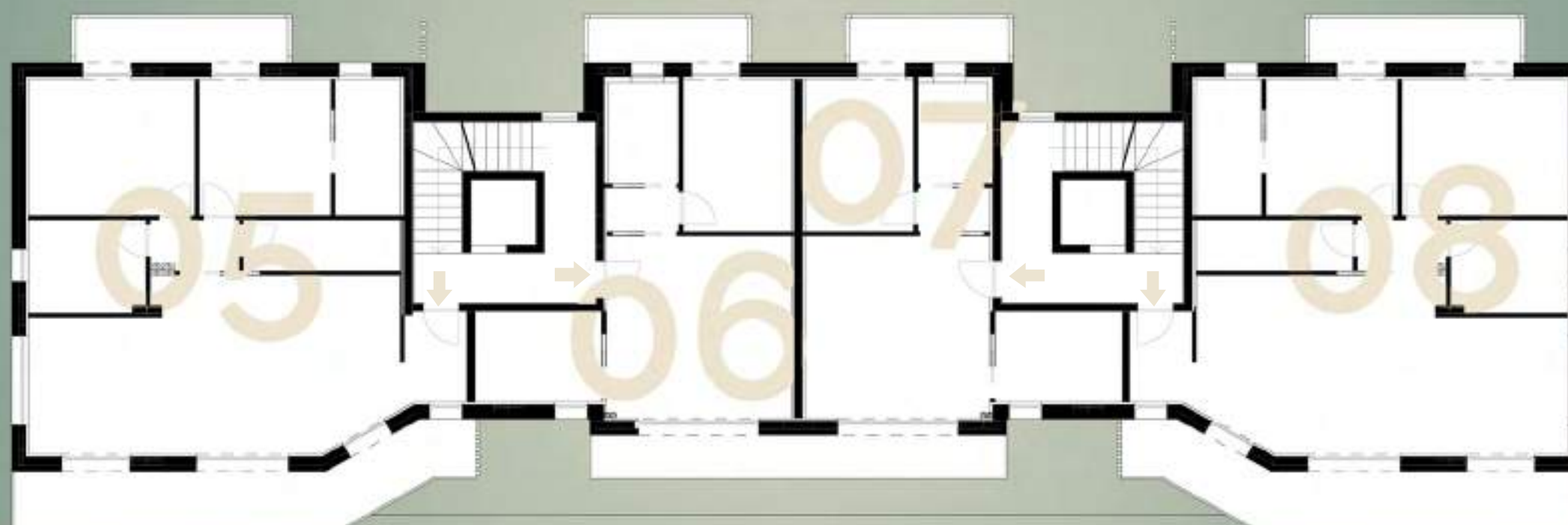
# piano interrato



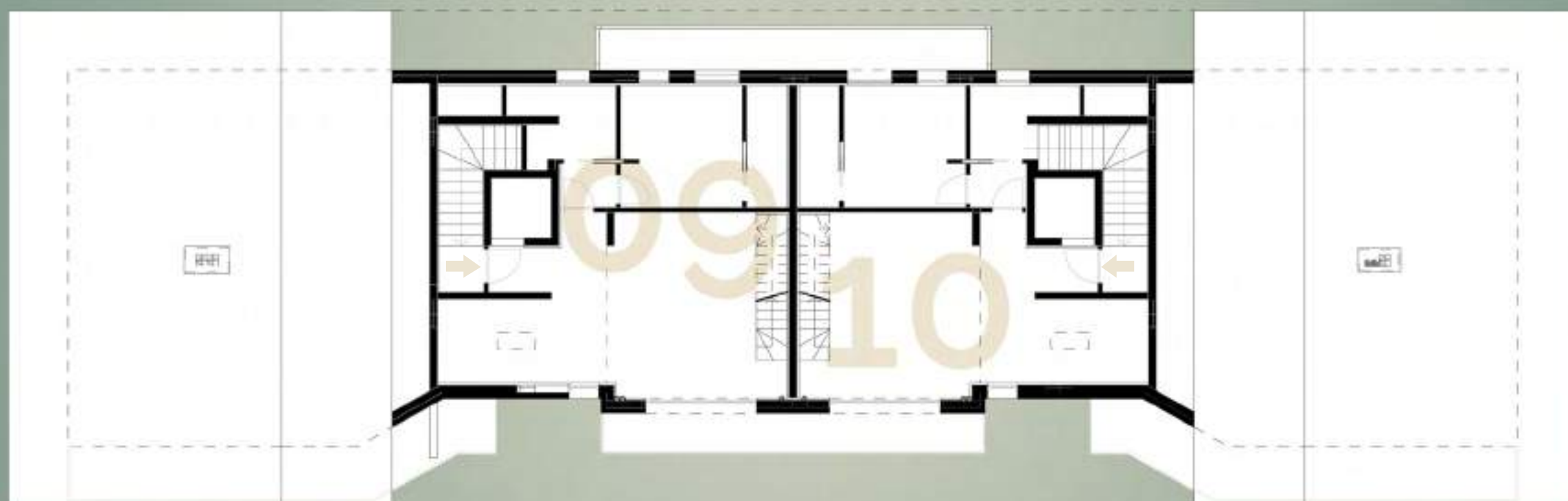
piano terra



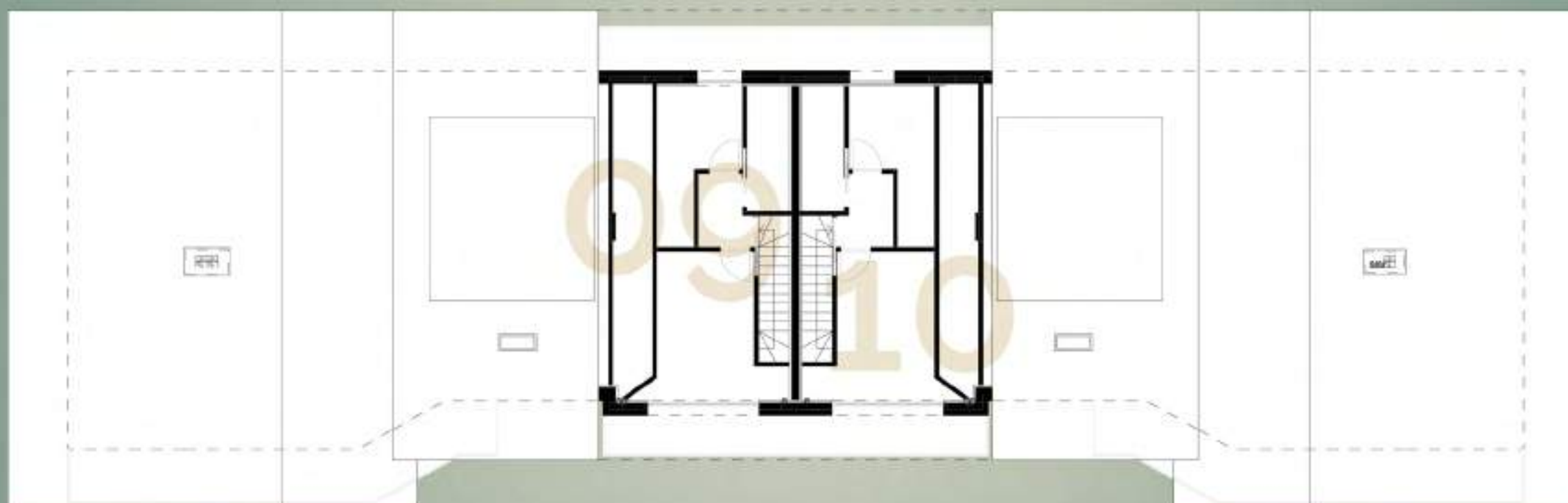
piano primo



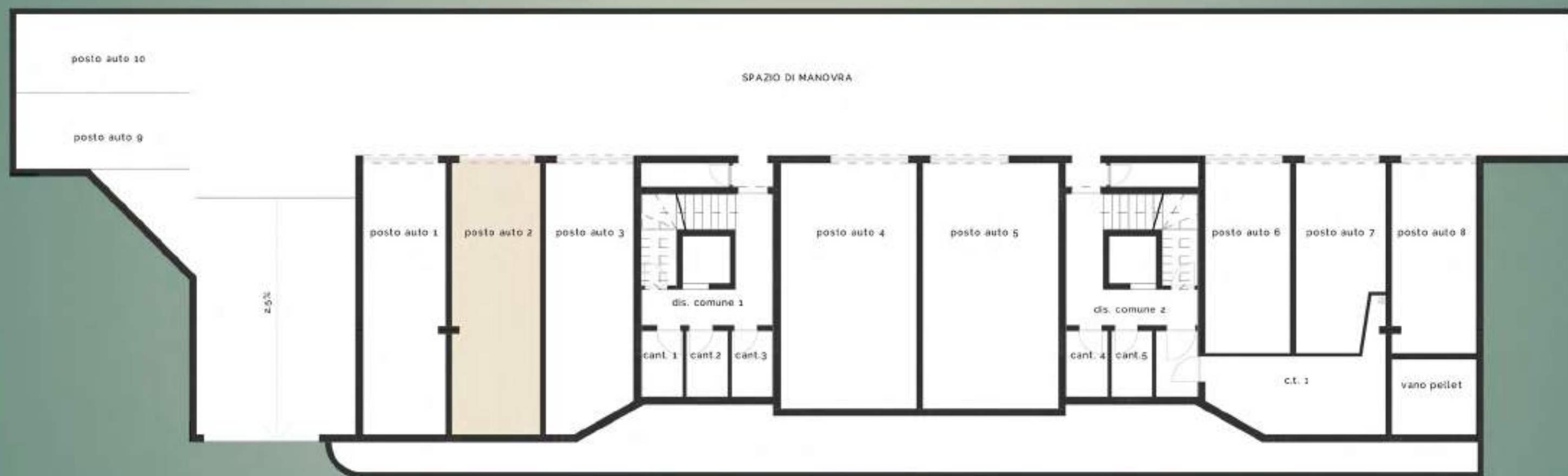
piano secondo



piano terzo



# piano interrato

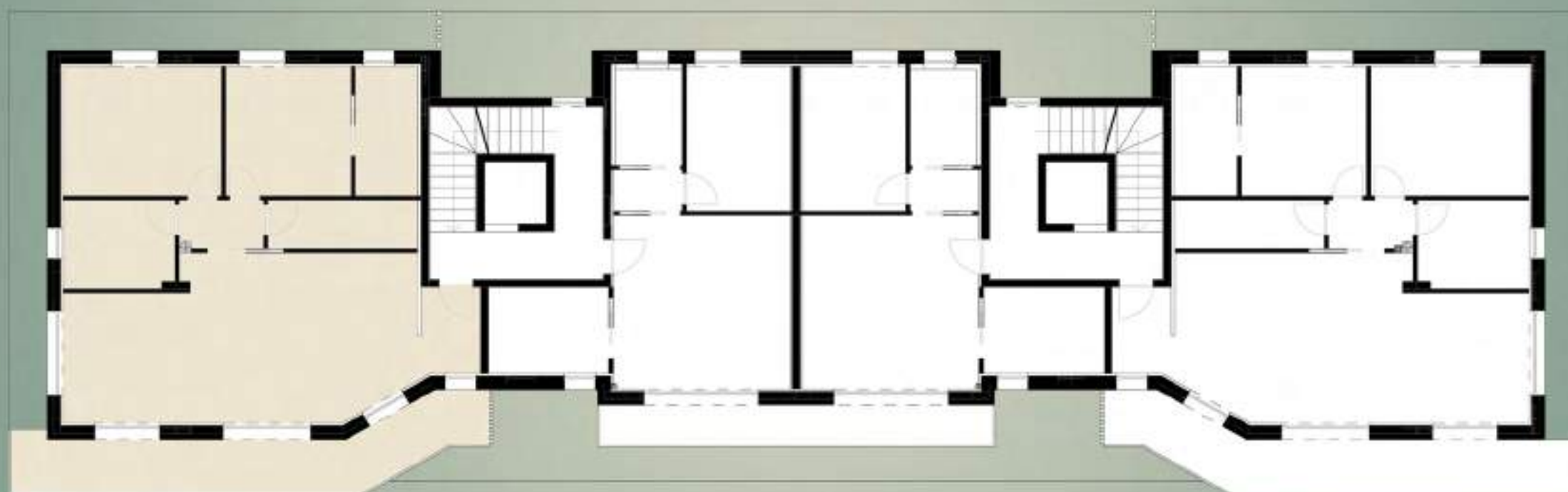


## info

Sup. posto auto 16,05 mq

unità **01**

piano terra



unità **01**

# piano terra



## info

Sup. lorda	104,31 mq
Sup. terrazze	6,55 mq
	110,86 mq

unità **01**

# piano interrato



## info

Sup. cantina	1,36 mq
Sup. posto auto	8,39 mq
	9,75 mq

unità **02**

piano terra



unità 02

# piano terra

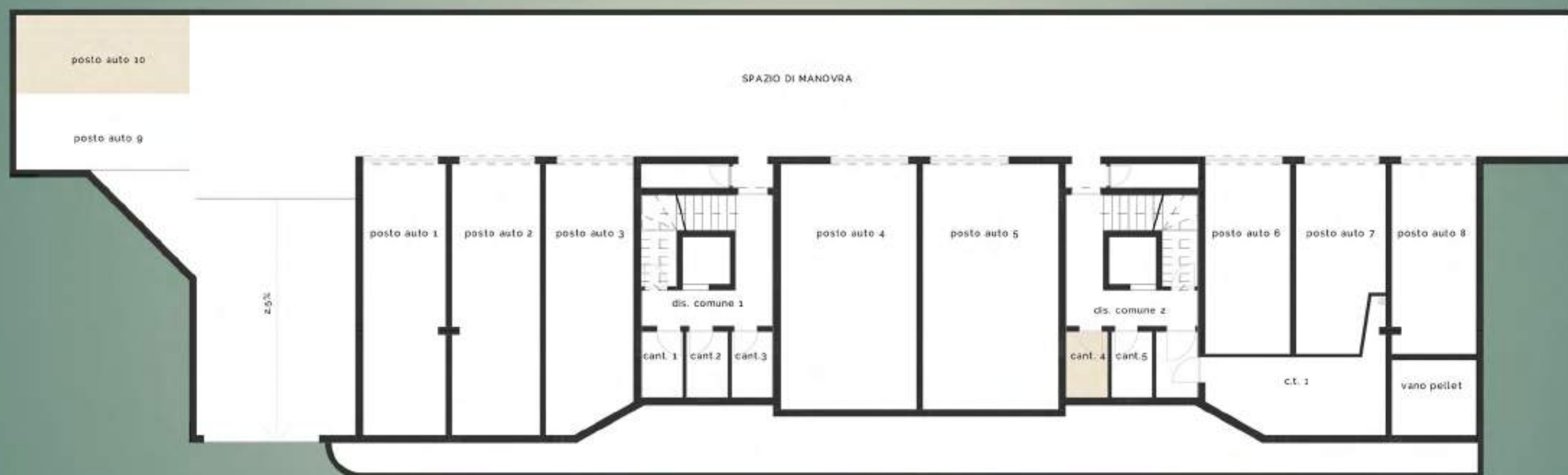


## info

Sup. lorda	55.17 mq
Sup. terrazze	1.91 mq
	57.08 mq

unità **02**

# piano interrato



## info

Sup. cantina	1,36 mq
Sup. posto auto	8,39 mq
	9,75 mq

unità **03**

piano terra



unità **01**

# piano terra

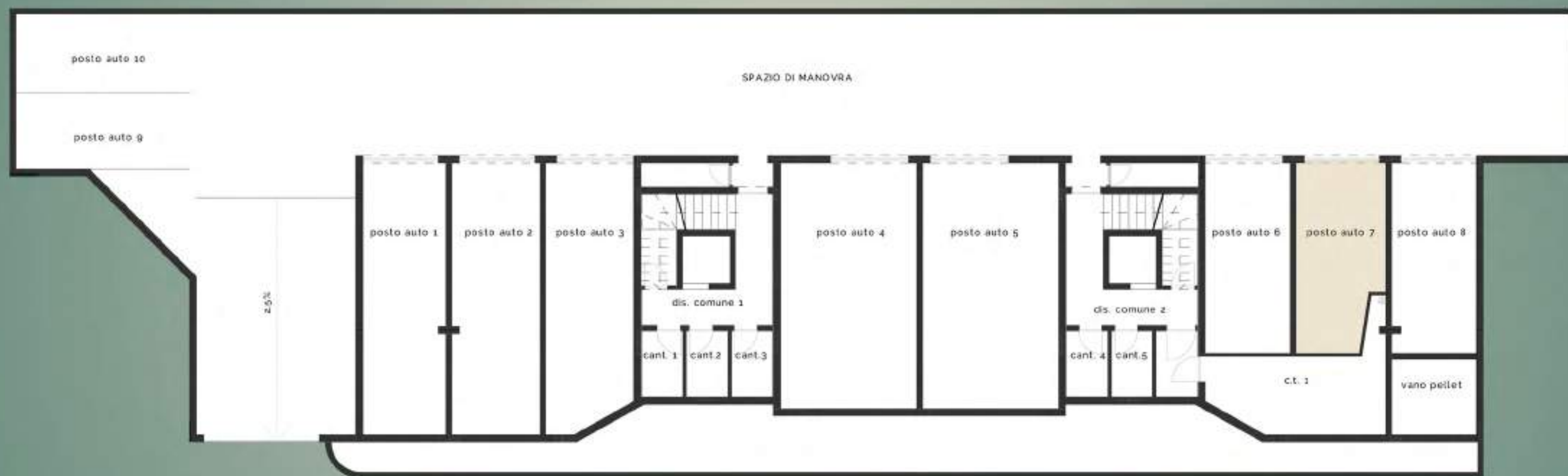


## info

Sup. lorda	55.17 mq
Sup. terrazze	1.91 mq
	57.08 mq

unità **03**

# piano interrato

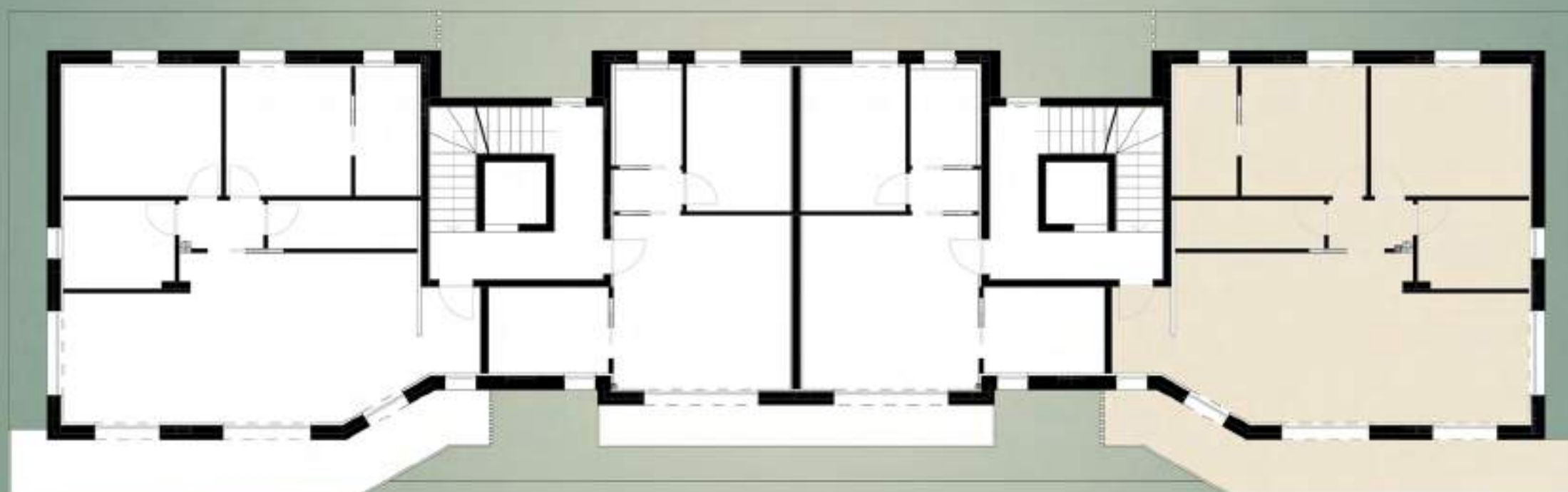


## info

Sup. posto auto 10,49 mq

unità 04

piano terra



unità 04

## piano terra



### info

Sup. lorda	104,31 mq
Sup. terrazze	6,55 mq
	110,86 mq

unità **04**

# piano interrato

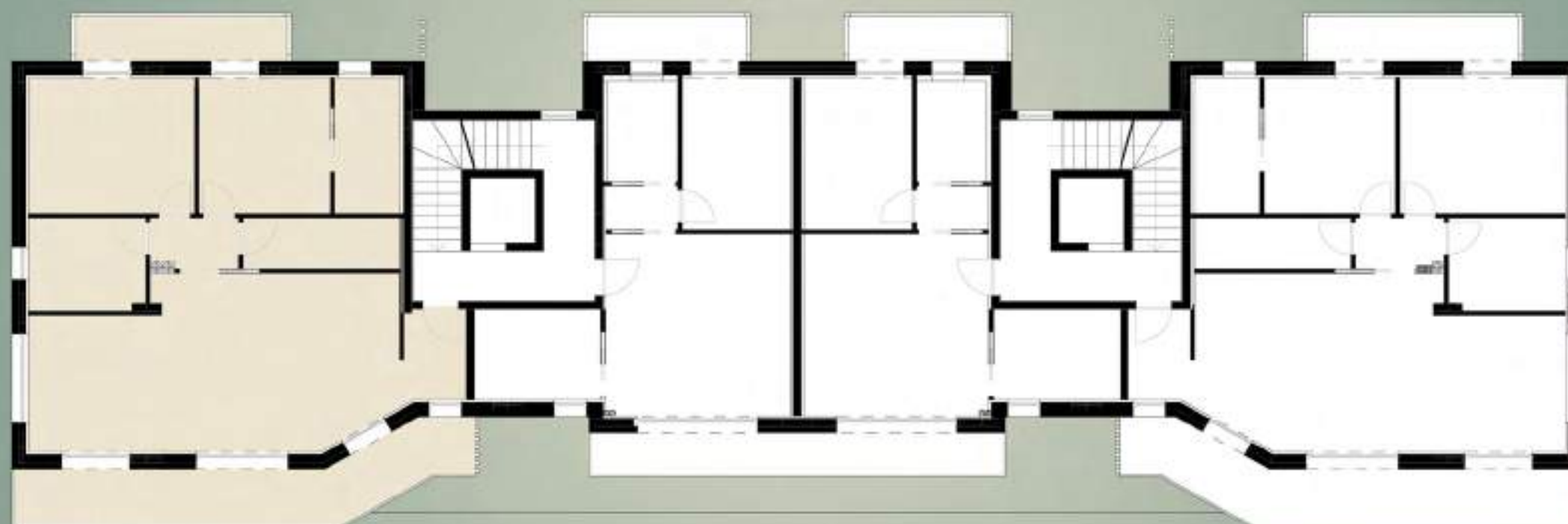


## info

Sup. cantina	1,44 mq
Sup. posto auto	15,52 mq
	16,96 mq

unità **05**

piano primo



# piano primo



## info

Sup. lorda	104.31 mq
Sup. terrazze	8.16 mq
	112.47 mq

unità **05**

# piano interrato



## info

Sup. cantina	1,44 mq
Sup. posto auto	15,28 mq
	16,72 mq

unità 06

piano primo



# piano primo

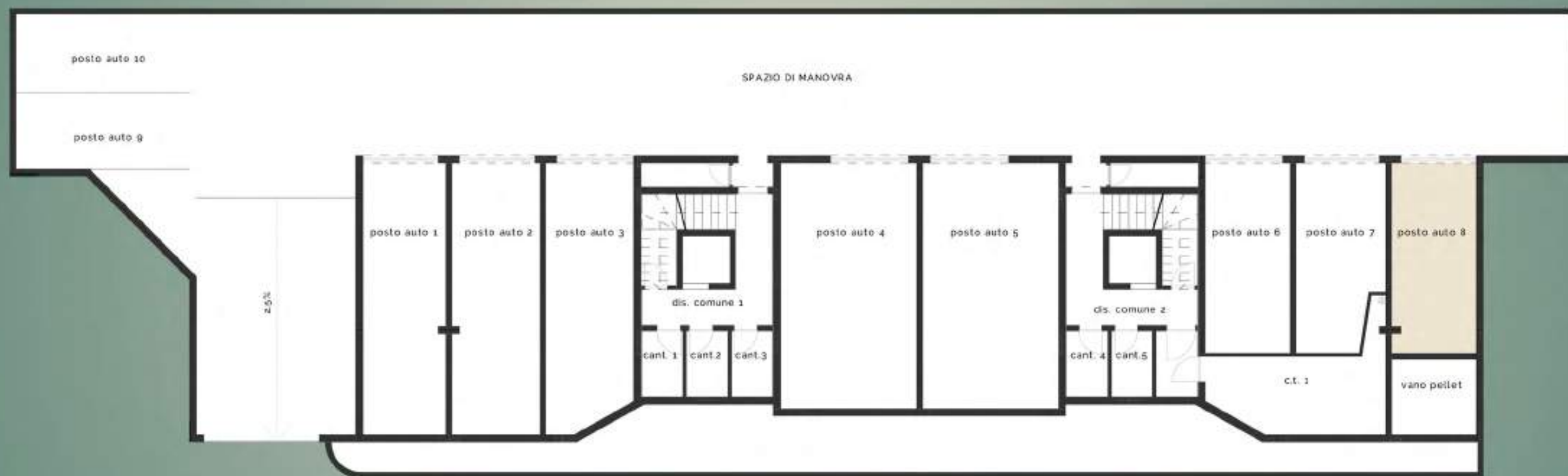


## info

Sup. lorda	55.17 mq
Sup. terrazze	3.59 mq
	58.76 mq

unità **06**

# piano interrato



## info

Sup. posto auto 11,33 mq

unità 07

piano primo



# piano primo

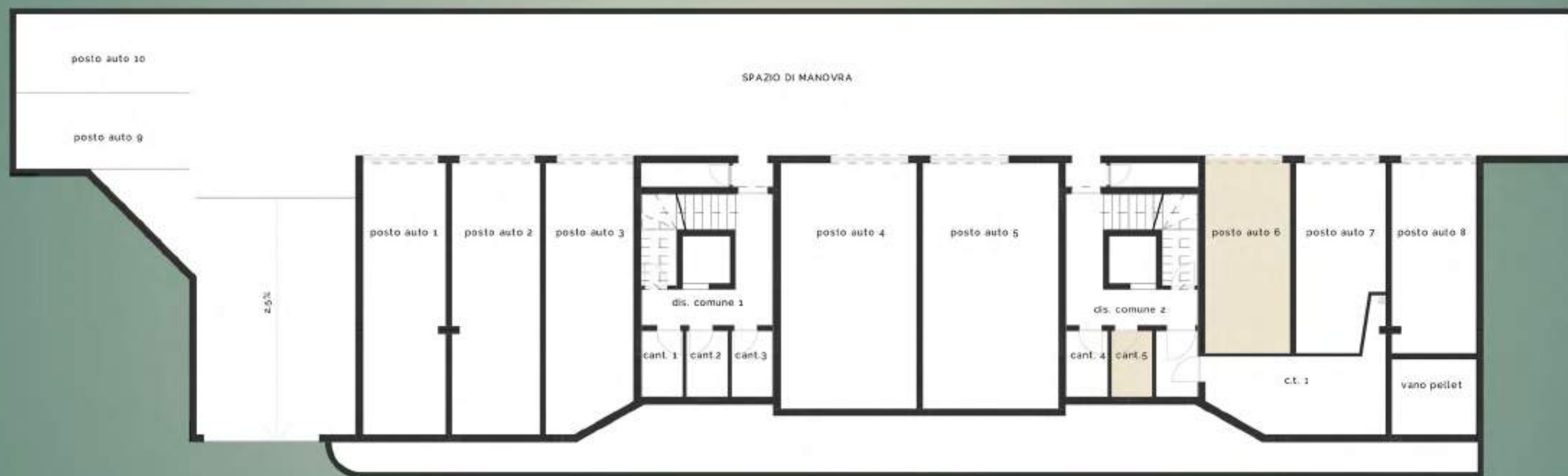


## info

Sup. lorda	55.17 mq
Sup. terrazze	3.59 mq
	58.76 mq

unità **07**

# piano interrato

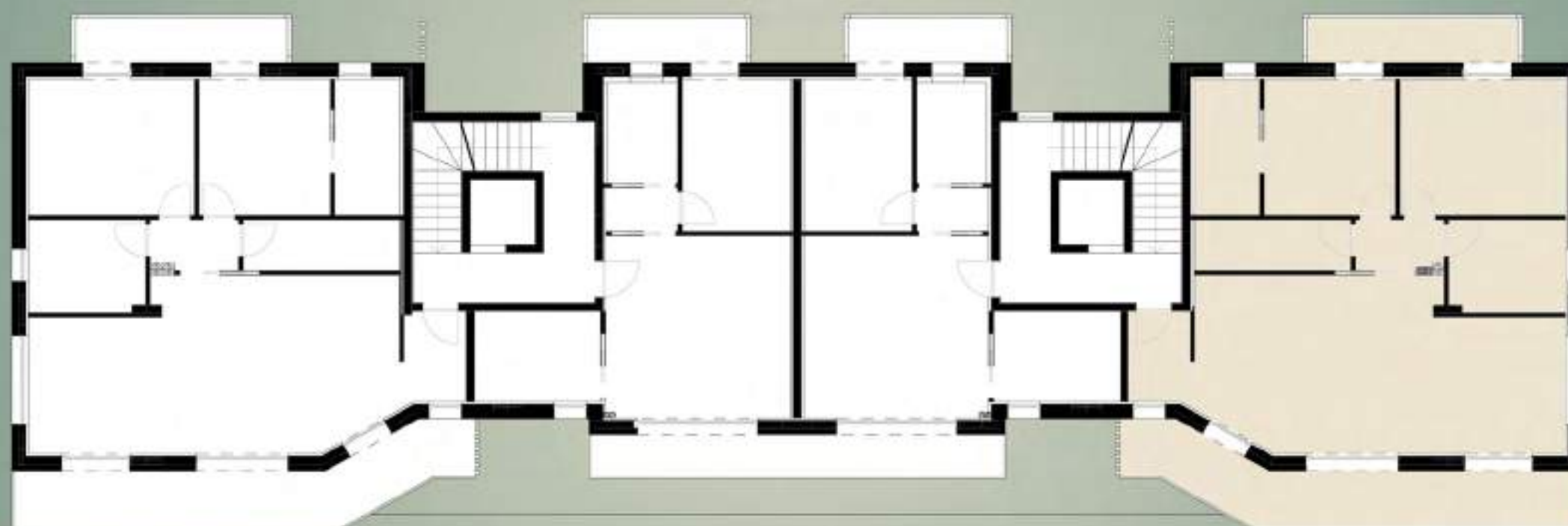


## info

Sup. cantina	1,36 mq
Sup. posto auto	10,63 mq
	11,99 mq

unità 08

piano primo



# piano primo

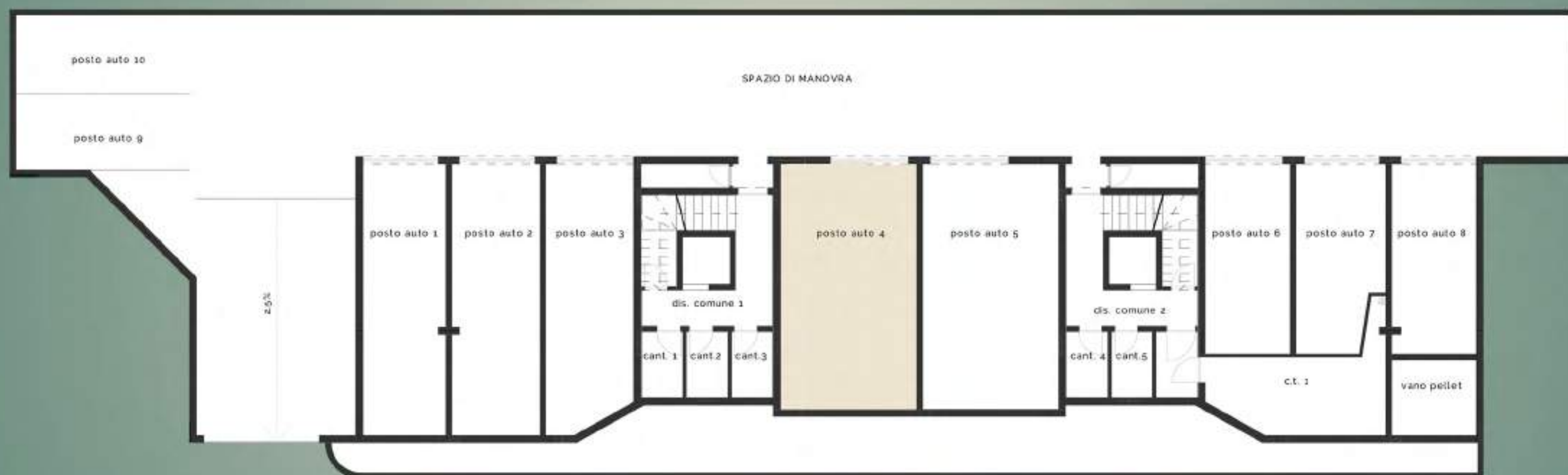


## info

Sup. lorda	104.31 mq
Sup. terrazze	8.16 mq
	112.47 mq

unità **08**

# piano interrato

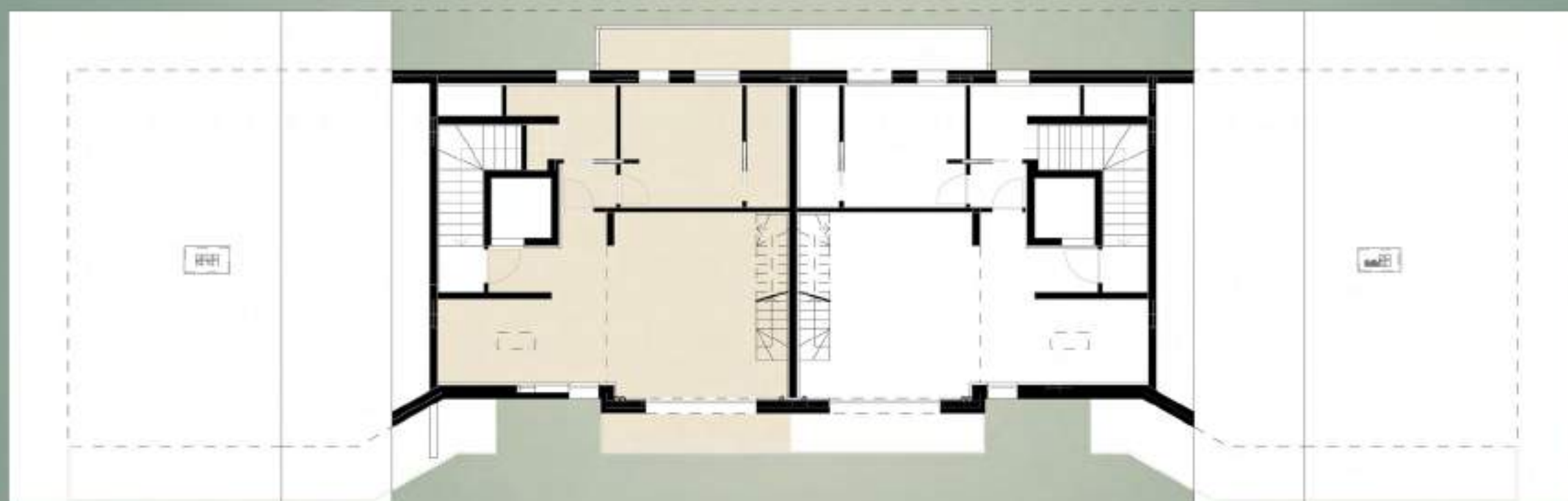


## info

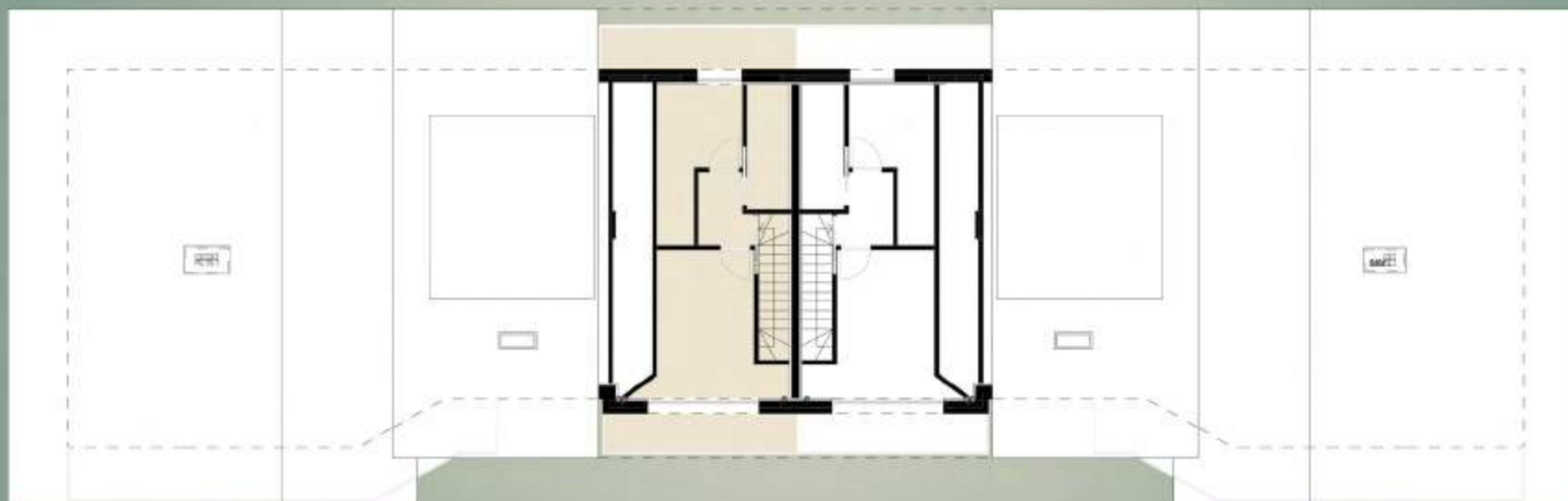
Sup. posto auto 22,12 mq

unità 09

piano secondo



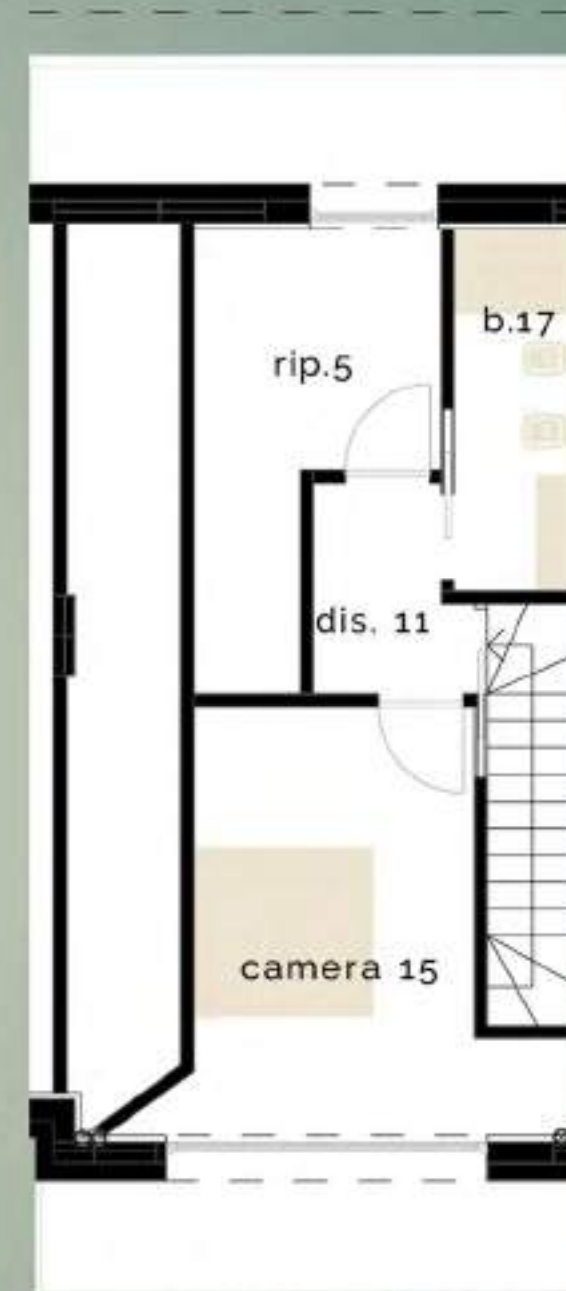
piano terzo



## piano secondo



## piano terzo



### info

Sup. lorda	126,34 mq
Sup. terrazze	8,11 mq
	134,45 mq

unità 09

# piano interrato

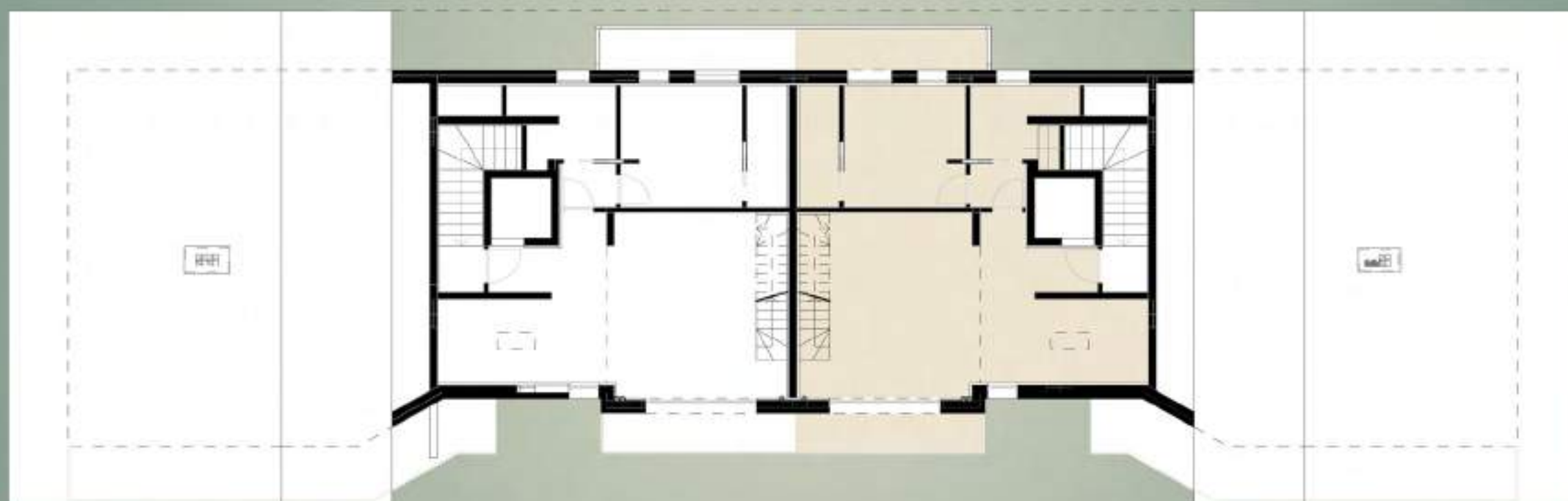


## info

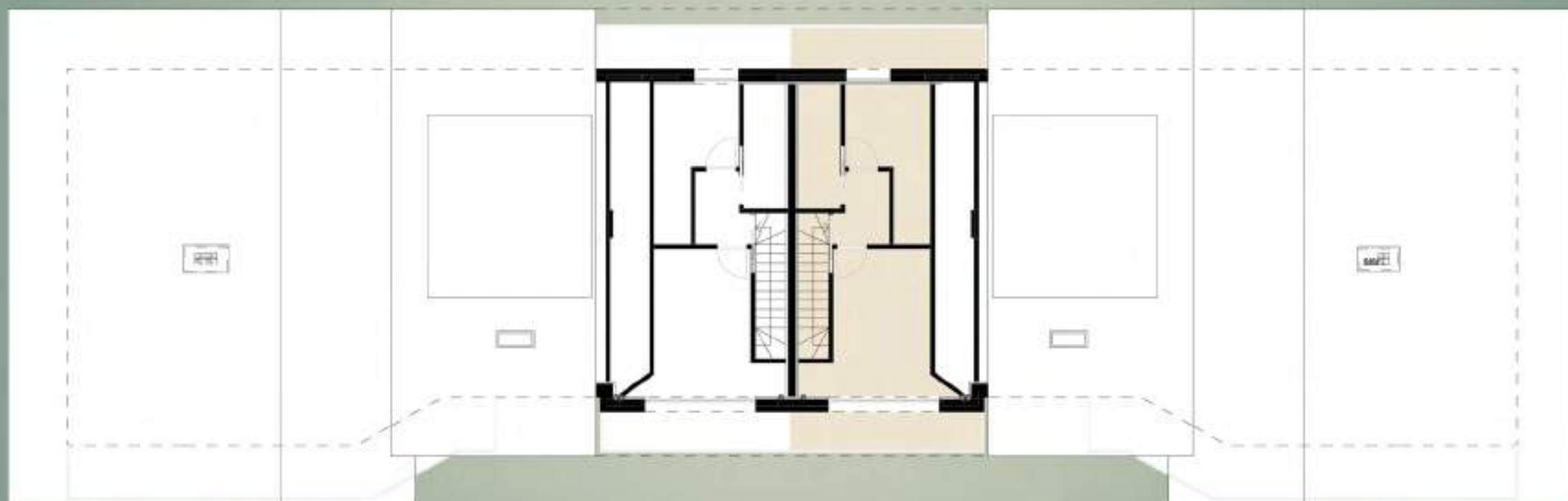
Sup. posto auto 22,12 mq

unità **10**

piano secondo



piano terzo



unità **10**

## piano secondo



## piano terzo



### info

Sup. lorda	126,34 mq
Sup. terrazze	8,11 mq
	134,45 mq

unità **10**

viste



unità

01  
04  
05  
08

viste



unità

02  
03  
06  
07